

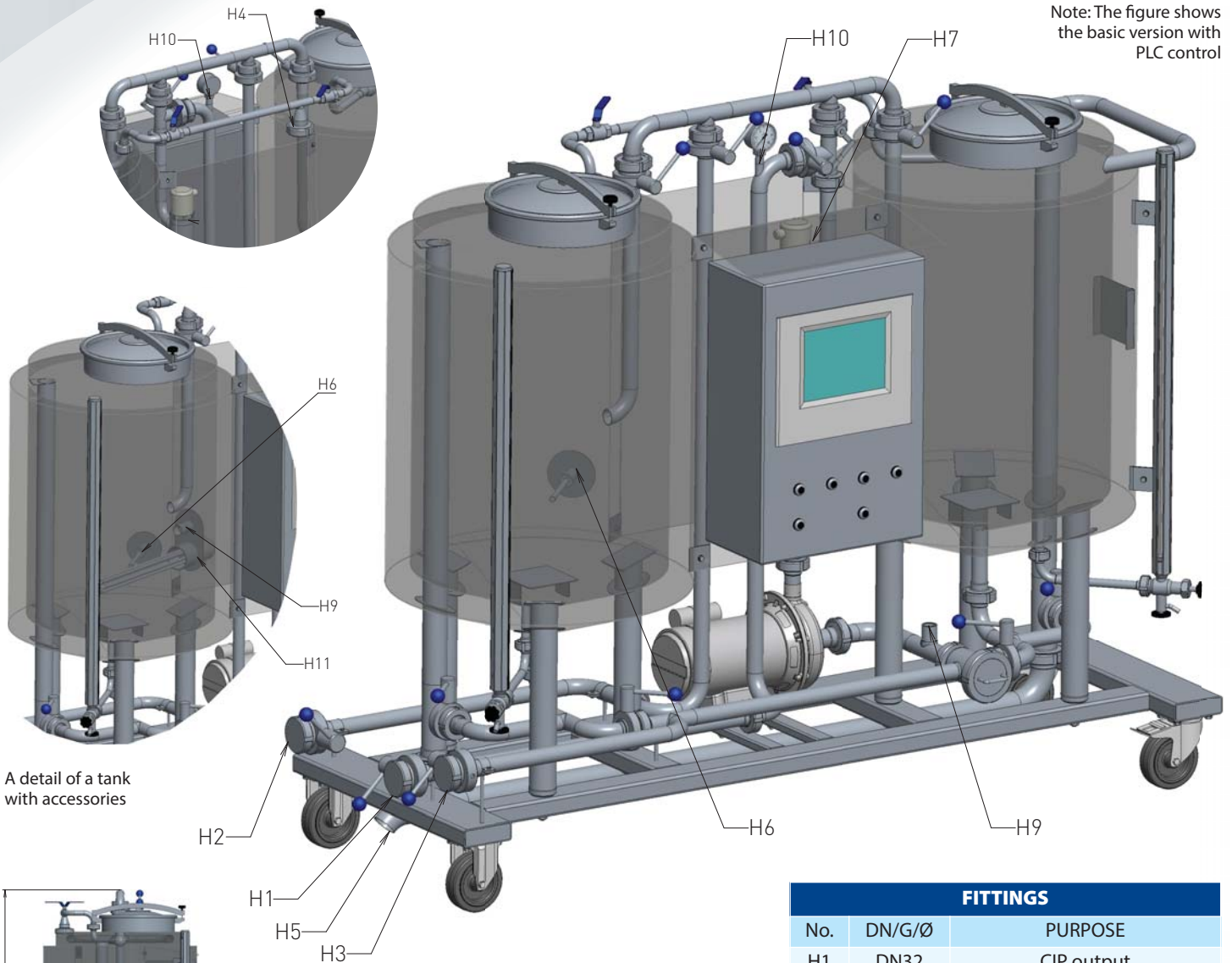
DESTILA®

www.destila.eu

Mobile CIP 2×150 l (2×250 l)

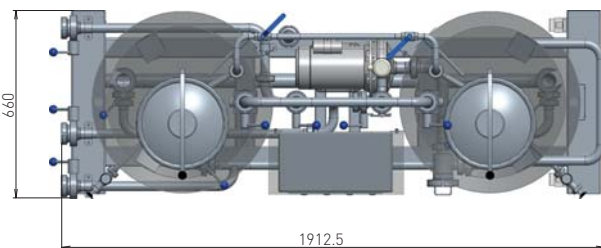
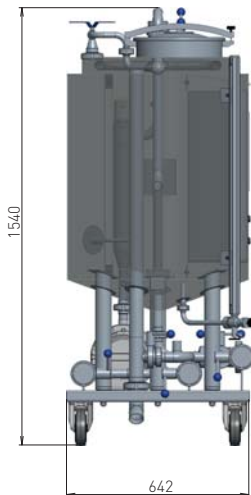
Mobile cleaning station CIP 2x150l (2x250 l) enables flexible and trouble-free cleaning of tanks with the volume of 60 (120) hl or of DN40 pipeline with the length of up to 75 (125) m.

Note: The figure shows the basic version with PLC control



A detail of a tank with accessories

Illustration



FITTINGS

No.	DN/G/Ø	PURPOSE
H1	DN32	CIP output
H2	DN32	CIP return to the pump / water filling
H3	DN32	CIP return to the pump
H4	DN20	Water inlet for tank cleaning
H5	DN50	tank outlet / discharge
H6	G1/2"	temperature sensor
H7	G1/4"	temperature sensor
H8	M18×1,5	flow rate sensor
H9	G1/2"	flooding sensor
H10	G1/4"	manometer
H11	M48×2	heating body

Components:

Advantages:

- Possibility of the tank cleaning without passing through the storage tank
- Possibility of the cleaning solution heating during cleaning
- Possibility of the pipeline cleaning

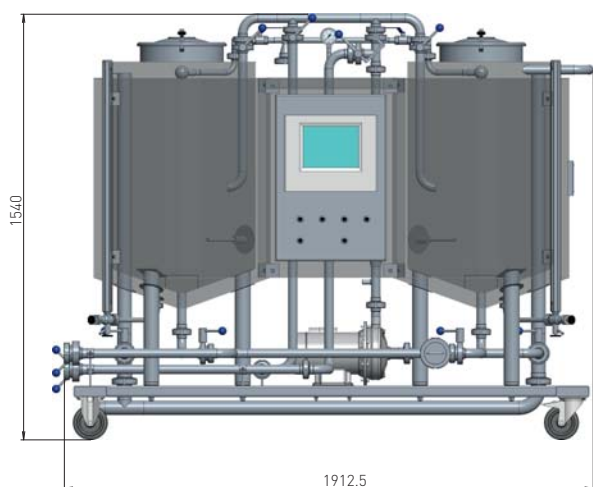
Standard accessories:

- Control by buttons, switches and regulators
- Two insulated tanks of 150 l
- An electric heating body in the pipeline of the CIP station for continuous heating during cleaning
- Pump output regulation by means of a potentiometer
- A heating switch

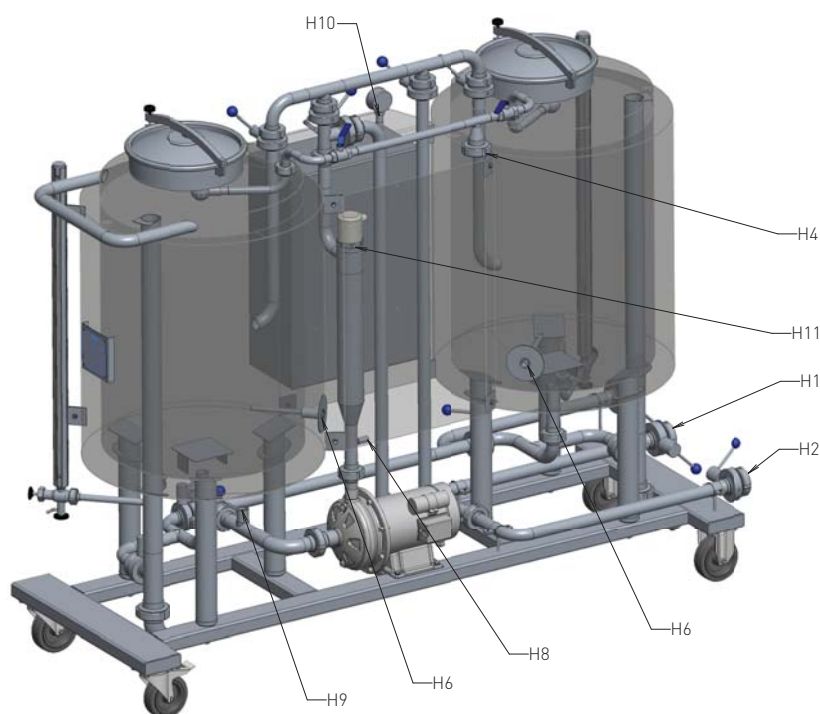
- A pump switch
- Temperature regulator at the electric heating body outlet
- Shower ball in every tank
- Pump filter
- CIP outlet
- CIP return to the pump
- CIP return to the tank

Optional accessories:

- An additional electric heating body in the left tank for simultaneous heating of both tanks
- PLC control using a touch screen
- Alternative connection (DN40, CLAMP etc.)



The figure shows the version with PLC control



Technical data:

Connection	DN32 (DIN 11851)
Volume	2x150 (2x250) litres
Weight	280 (300) kg
Maximum flow rate	160 l/h
Maximum pump pressure	2,8 Bar
Input	8 kW (14 kW variant with two heating bodies)
Power supply	3AC+N+PE 400V/230V/50Hz
Maximum achievable temperature	90° C
Outer dimensions	1900 x 700 x 1,600 mm (l x w x h)
Maximum volume of the tank cleaned	60 (120) hl
Maximum length of the pipeline cleaned	DN32 = max. 100 (175) m / DN40 = max. 75 (125) m

⚠ For the mobile CIP it is strictly forbidden to use detergents with solid particles (such as flakes) and chloride-based detergents.

